

An outstanding contemporary family development in The Royal Burgh of Kintore



# cedarWOOD

Gauchhill Road | Kintore



CedarWood is designed very much with families in mind - offering a choice of 3, 4 & 5 bedroom house styles, including bungalows.

Each contemporary design is crisp and clean, with the focus throughout on generous living space.

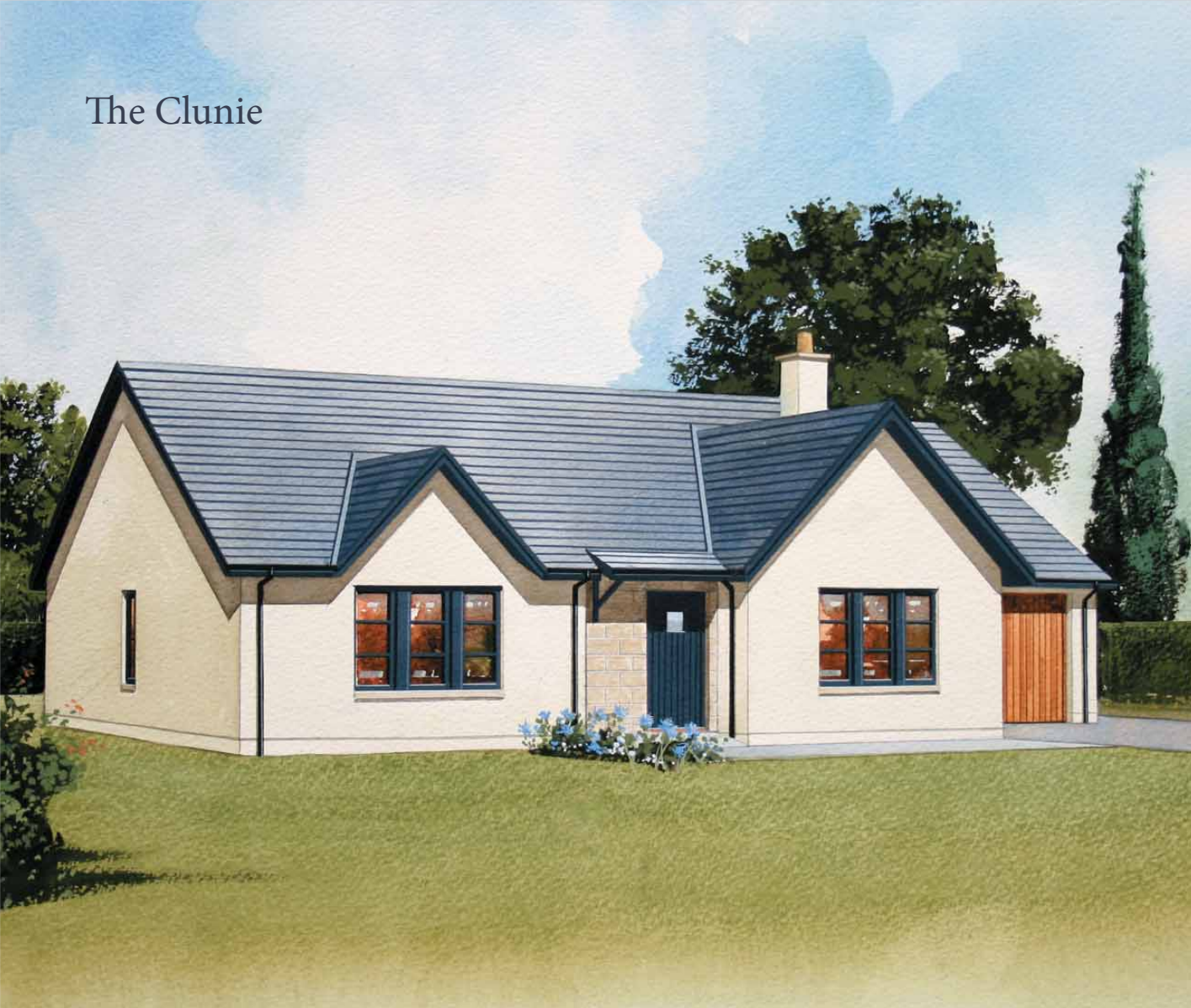
All to superb specification, from the high-quality, German kitchen with integrated appliances, to the stunning bathrooms and en suites by Roca.

AJC Homes is pleased to offer these new houses - **designed for living - built to last.**





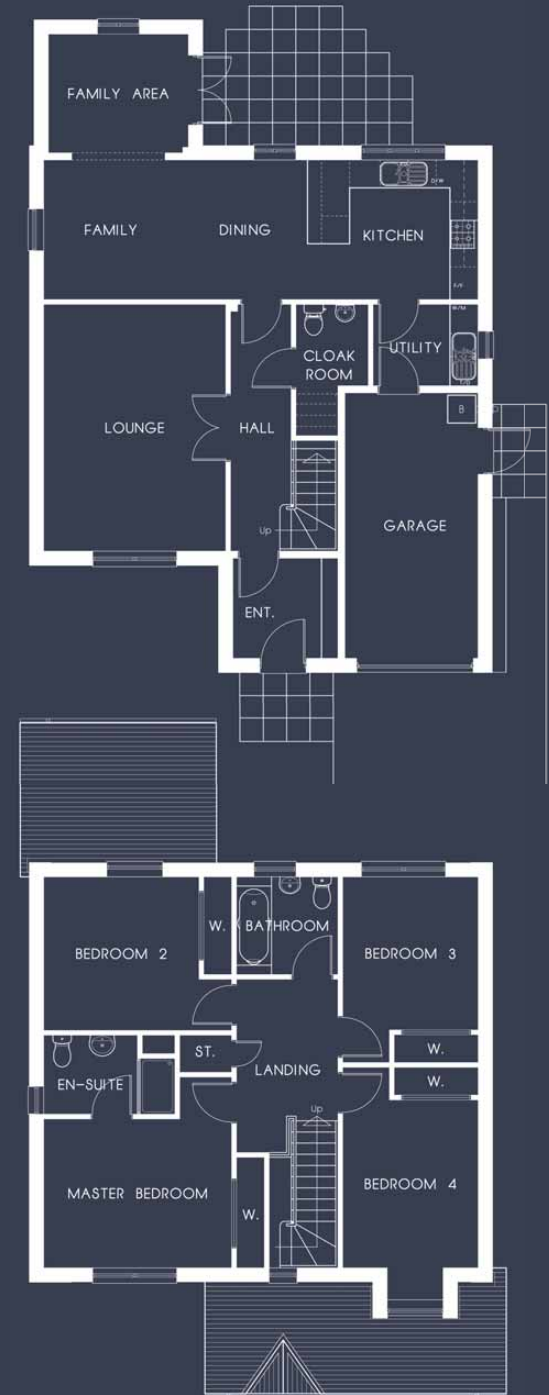
# The Clunie



Lounge	3.62 x 5.48	Bathroom	2.14 x 2.89
Kitchen/Breakfast Area/Sun Lounge	3.62 x 9.95	Master Bedroom Ensuite	2.30 x 1.60
Master Bedroom	4.34 x 3.59**	Cloakroom	1.74 x 1.10
Bedroom 2	3.51 x 2.58**	Utility	3.15 x 3.00*
Bedroom 3	3.49 x 2.58**	Garage	3.08 x 5.83
Entrance Vestibule	1.95 x 2.39		

\* L shaped room longest size \*\* Excludes wardrobe recess

# The Morlich

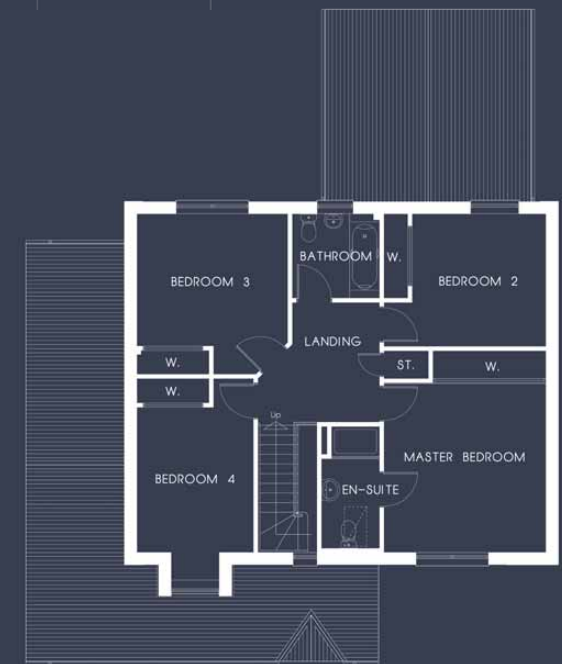


Lounge	3.88 x 5.28
Kitchen/Dining/Family/Family Area	9.27 x 5.68*
Master Bedroom	4.01 x 4.09*
Bedroom 2	3.31 x 3.29**
Bedroom 3	2.90 x 3.28**
Bedroom 4	2.90 x 5.07***
Entrance Vestibule	2.28 x 2.13
Bathroom	2.16 x 2.09

Master Bedroom Ensuite	2.80 x 1.70
Cloakroom	1.55 x 2.80*
Utility	2.24 x 1.75
Garage	2.83 x 5.66

\*L shaped room longest size  
 \*\* Excludes wardrobe recess \*\*\* Longest size includes dormer

# The Kinord



Lounge	4.63 x 5.28
Kitchen/Dining/Family/Sun Lounge	10.12 x 7.73*
Master Bedroom	4.01 x 4.19
Bedroom 2	3.31 x 3.29**
Bedroom 3	3.74 x 3.98*
Bedroom 4	2.90 x 5.07***
Entrance Vestibule	2.37 x 2.13
Bathroom	2.18 x 2.09

Master Bedroom Ensuite	1.47 x 3.12
Cloakroom	1.78 x 2.60*
Utility	1.98 x 2.68
Garage	4.98 x 6.18

\*L shaped room longest size  
 \*\* Excludes wardrobe recess \*\*\* Longest size includes dormer

# The Ruthven



Lounge	4.48 x 4.78	Master Bedroom Ensuite	2.69 x 1.20
Kitchen/Dining/Family	9.13 x 4.33*	Bedroom 2 Ensuite	2.29 x 1.44
Master Bedroom	4.29 x 5.11***	Cloakroom	2.73 x 1.44
Bedroom 2	4.44 x 3.37*	Utility	2.73 x 2.79
Bedroom 3	3.89 x 2.74	Garage	4.98 x 5.93
Bedroom 4	3.23 x 2.89**		
Bedroom 5	2.61 x 2.89		
Entrance Vestibule	2.22 x 1.88		
Bathroom	2.69 x 2.50*		

\*L shaped room longest size

\*\* Excludes wardrobe recess

\*\*\* Longest size includes dormer

AJC Homes  
Aboyne Castle  
Aboyne  
Aberdeenshire  
AB34 5JP

Tel: +44(0)1339 887778  
Fax: +44(0)1339 886100  
Email: cedarwood@ajcscotland.com

[www.ajcscotland.com](http://www.ajcscotland.com)

The information including the site layout shown in this document is intended for illustration purposes only and may change for example in response to market demand or ground conditions. Consequently, it should be treated as general guidance and cannot be relied upon as accurately describing any of the Specified Matters prescribed by any order made under Property Misdescription Act 1991. Nor do the contents constitute a contract, part of a contract or a warranty.